

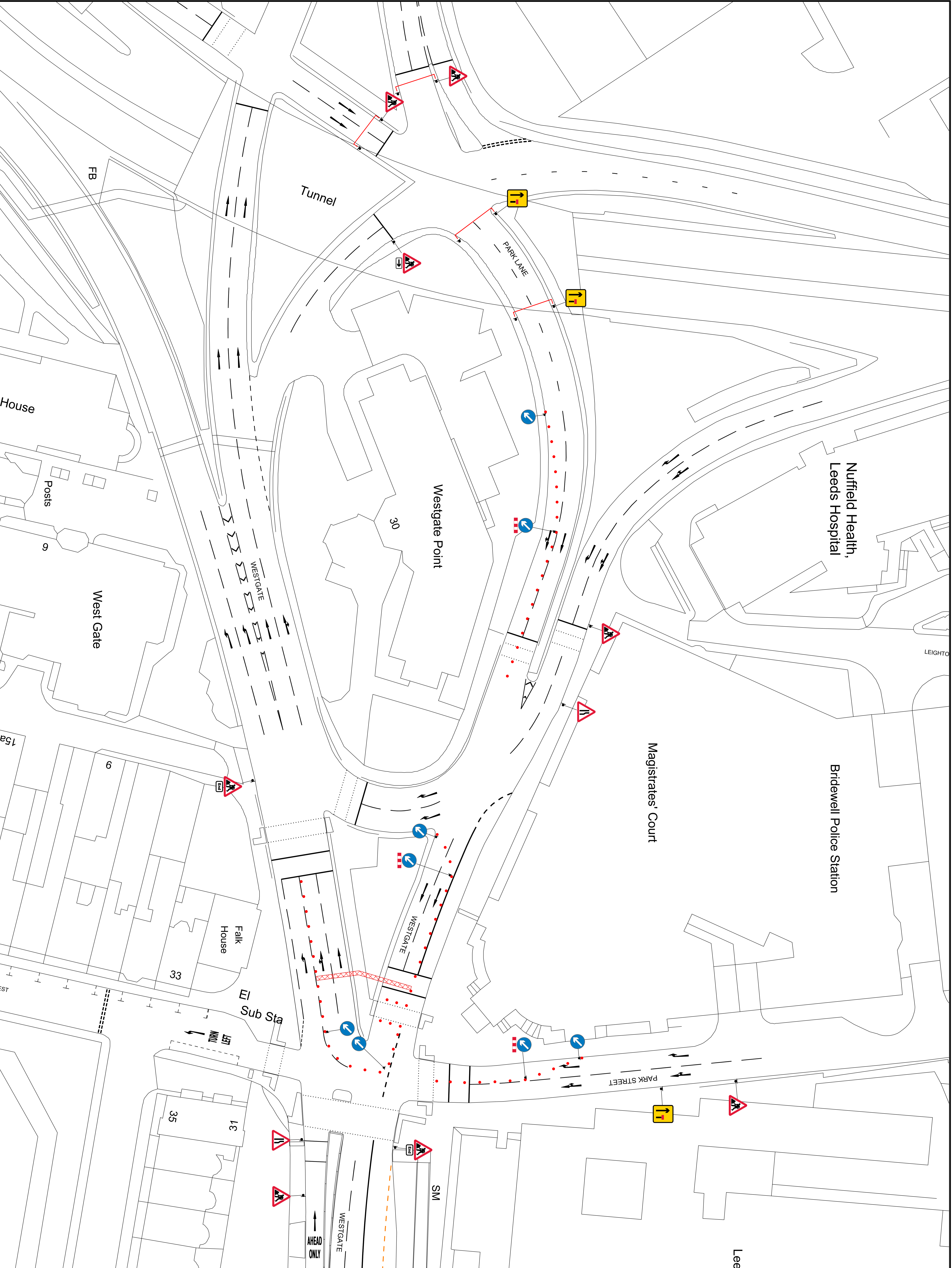
EXCALON TRAFFIC MANAGEMENT

NOTES

1. ALL SIGNS ARE AS PER CHAPTER 8.
2. DISTANCE BETWEEN SIGNS ARE NOT TO SCALE AND ARE FOR LAYOUT PURPOSES ONLY.
3. SIGNS SHOULD BE POSITIONED IN A SAFE WORKING SPACE.

Legend

- SIGN POSITION AND DIRECTION
- CONE
- ▨ WORKING AREA



EXCALON HEAD OFFICE
EXCALON YARD,
2 DUNCAN STREET,
SALFORD,
M5 3SQ

DRAWN BY:	KC	DATE:	25/10/22
CHECKED BY:	ML	DATE:	25/10/22
APPROVED BY:	ML	DATE:	25/10/22
DRAWING No.	PHASE 2	REVISION	0